

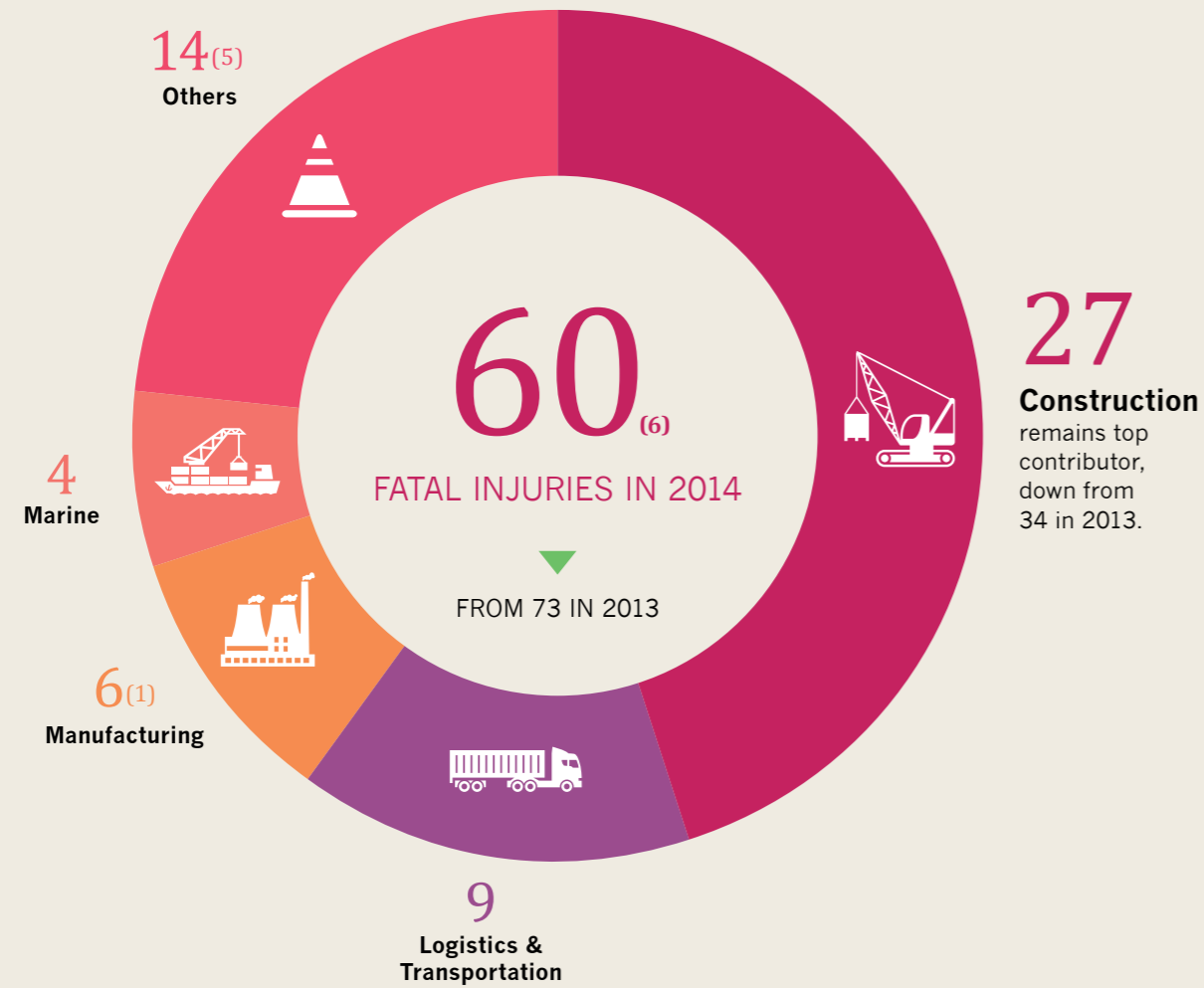


OUR WSH
PERFORMANCE

01 / WORKPLACE INJURIES 2014

02 / OVERALL WSH STATISTICS

FATAL



Note: Figures in parentheses refer to the number of work-related traffic injuries.

RATE

1.8

per 100,000
employed persons

FROM 2.3 IN 2013

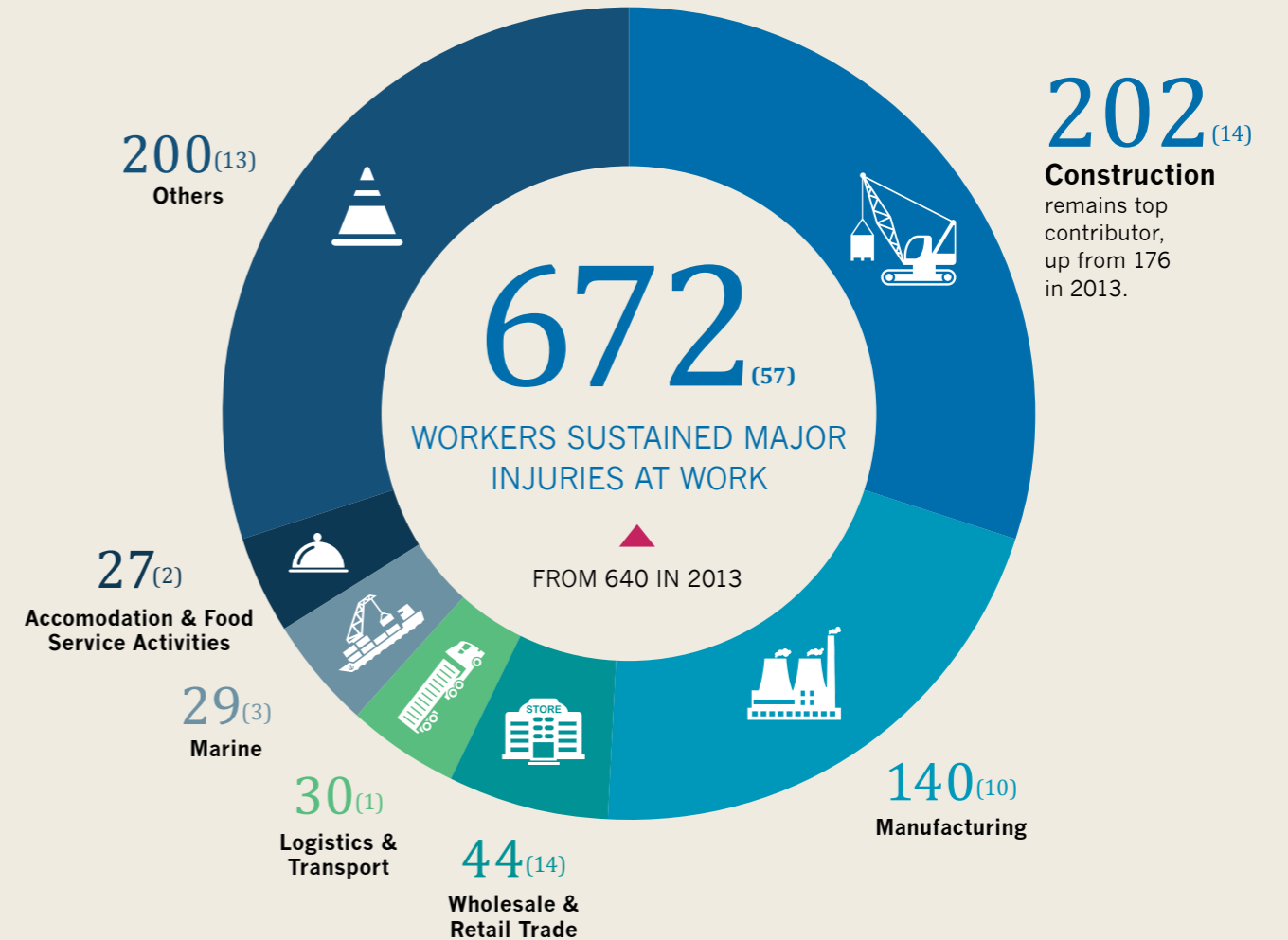
INSIGHTS

Fall From Heights



remains leading incident type, accounting for 17% of the fatal injuries. Majority of fatal injuries due to Falls from Heights occurred at the physical workplace involving structures, roofs and formwork.

NON-FATAL
MAJOR INJURIES



Note: Figures in parentheses refer to the number of work-related traffic injuries.

RATE

20.0

per 100,000
employed persons

FROM 19.8 IN 2013

INSIGHTS

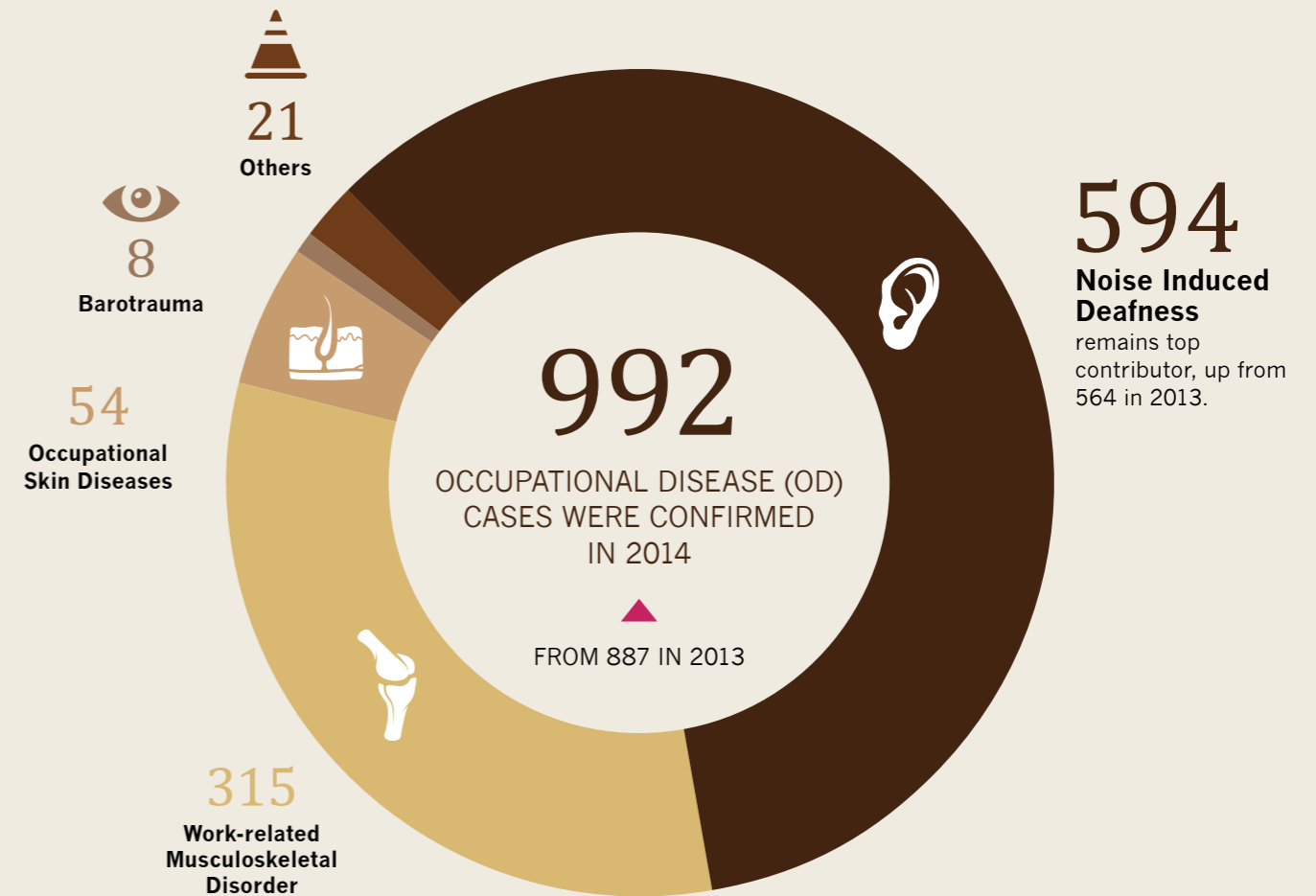
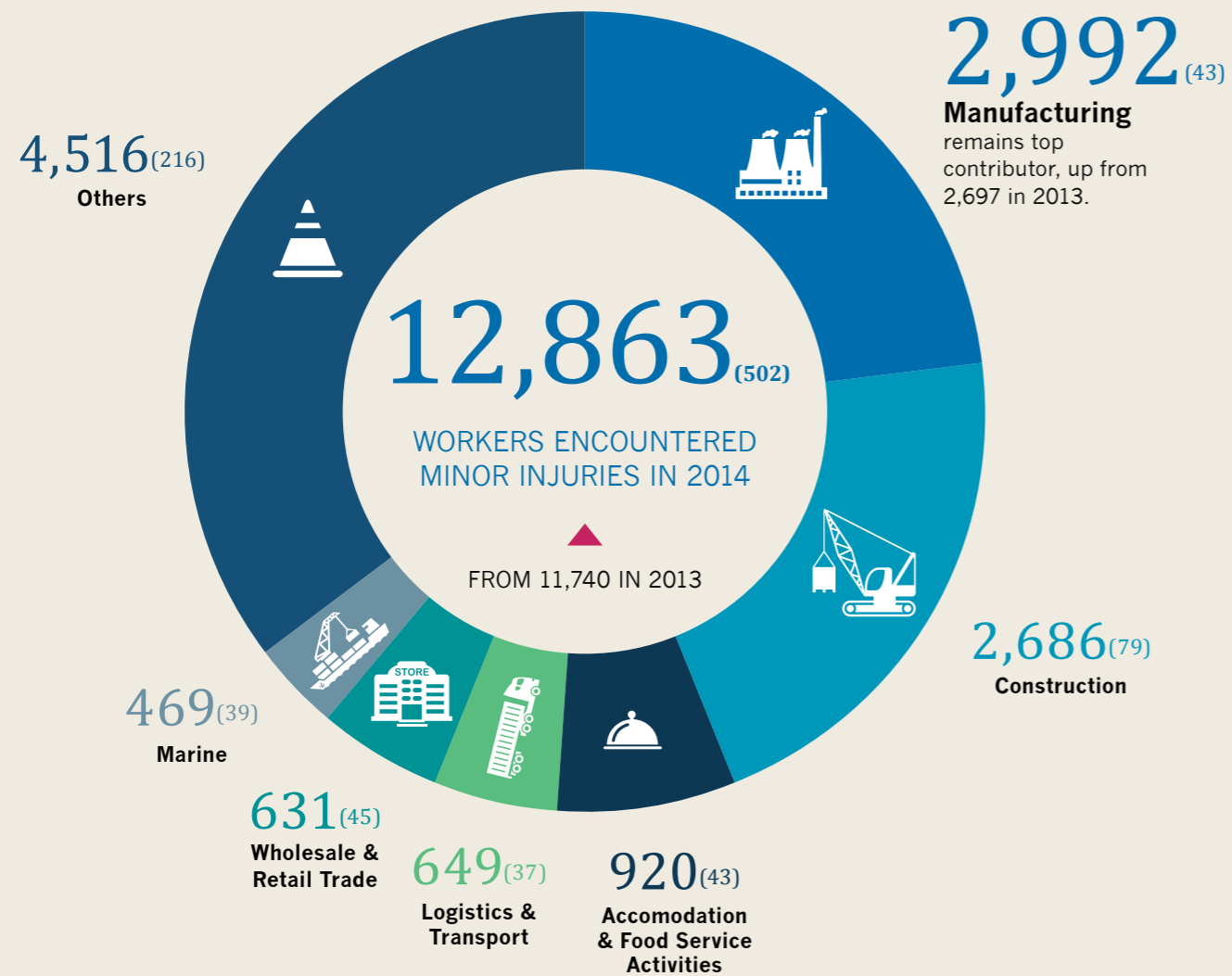
Slips, Trips & Falls



remains main area of concern as it was the leading incident type - 25% of major injuries

NON-FATAL
MINOR INJURIES

OCCUPATIONAL DISEASE



Note: Figures in parentheses refer to the number of work-related traffic injuries.

RATE

383
per 100,000
employed persons

FROM 362 IN 2013

INSIGHTS

Slips, Trips & Falls

remains main area of concern as it was the leading incident type - 23% of minor injuries

RATE

29.5
per 100,000
employed persons

FROM 27.4 IN 2013

INSIGHTS

Manufacturing Sector

continued to have the highest number of NID cases, it saw a slight increase from 275 in 2013 to 288 in 2014.

OVERALL WSH STATS

TABLE 1: NUMBER OF INJURIES AND OCCUPATIONAL DISEASES



	2013	2014
Overall Injuries	12,453 (552)	13,595 (565)
Fatal Injuries	73 (14)	60 (6)
Major Injuries	640 (51)	672 (57)
Minor Injuries	11,740 (487)	12,863 (502)
Occupational Diseases	887	992

Note: Figures in parentheses refer to the number of work-related traffic injuries.

TABLE 2: KEY WSH INDICATORS PER 100,000 EMPLOYED PERSONS



	2013	2014
Overall Injury Rate¹	384	405
Fatal Injury Rate	2.3	1.8
Major Injury Rate	19.8	20.0
Minor Injury Rate	362	383
Accident Frequency Rate²	1.6	1.7
Accident Severity Rate³	93	84
Occupational Disease Incidence Rate⁴	27.4	29.5

¹ Workplace Injury Rate
$\frac{\text{No. of Fatal and Non-Fatal Workplace Injuries}}{\text{No. of Employed Persons}} \times 100,000$
² Accident Frequency Rate (AFR)
$\frac{\text{No. of Workplace Accidents Reported}}{\text{No. of Man-hours Worked}} \times 1,000,000$
³ Accident Severity Rate (ASR)
$\frac{\text{No. of Man Days Lost To Workplace Accidents}}{\text{No. of Man-hours Worked}} \times 1,000,000$
⁴ Occupational Disease Incidence Rate
$\frac{\text{No. of Occupational Diseases}}{\text{No. of Employed Persons}} \times 100,000$

TABLE 3: WORK INJURY COMPENSATION REPORT



	2013	2014
No. of Permanent Incapacity (PI) and Death cases awarded compensation	4,543	4,607
Total sum of PI and Death compensation awarded (S\$, Million)	\$75.38	\$80.94
No. of accidents reported with no PI sustained	9,039	10,126