

FACTSHEET ON bizSAFE EVALUATION STUDY

Background

In January 2013, the Workplace Safety and Health (WSH) Institute¹ initiated a study to evaluate the effectiveness of the bizSAFE programme.

2 bizSAFE was developed by the WSH Council in 2007 to promote good WSH practices by helping companies build their WSH capabilities. Since the introduction of the programme seven years ago, the number of companies that have embarked on the bizSAFE journey has grown from 550 to more than 17,000 today. Thus, it was timely to review the programme to ensure it remains relevant to the industry.

Scope of the Study

3 The study saw the participation of 1,652 companies comprising 868 bizSAFE enterprises², 522 non-bizSAFE Small and Medium Enterprises (SMEs), and 262 bizSAFE Partners/Mentors and potential clients of SMEs. 68% of the participants were from the traditionally high-risk sectors such as construction, manufacturing and marine industries. The interviews were conducted via phone calls, onsite visits and electronic survey.

Key Findings

4 The study showed that bizSAFE enterprises performed better than non-bizSAFE enterprises in terms of building capability in managing WSH risks and demonstrating commitment towards WSH. The client companies saw value in engaging bizSAFE companies and indicated higher willingness to pay more for their services over non-bizSAFE companies. The key findings of the study are:

¹ More information about the Workplace Safety and Health Institute is available at www.wshi.gov.sg.

² These are companies with at least bizSAFE Level 3 registration with WSH Council (bizSAFE 3, 4 or STAR).

I



9/10 bizSAFE Enterprises agreed that bizSAFE helped to improve safety and health of their workplace.

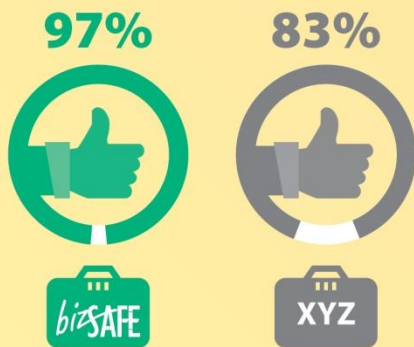
75% of bizSAFE Enterprises would recommend others to join bizSAFE.

II



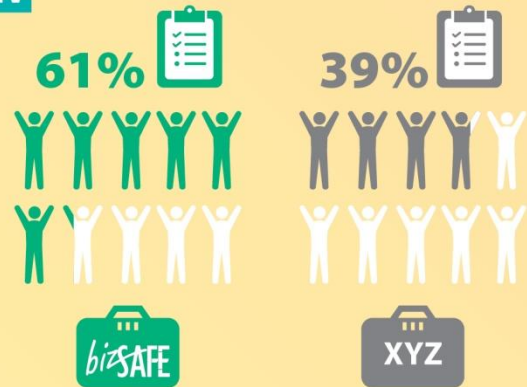
81% of client companies would prefer to engage bizSAFE Enterprises for future contracts because they managed WSH better than non-bizSAFE companies.

III



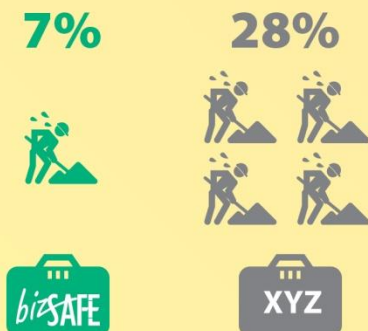
97% of bizSAFE Enterprises vs 83% of non-bizSAFE companies were aware of WSH risks in their workplaces.

IV



61% of bizSAFE Enterprises vs 39% of non-bizSAFE companies involved their workers in risk assessment process.

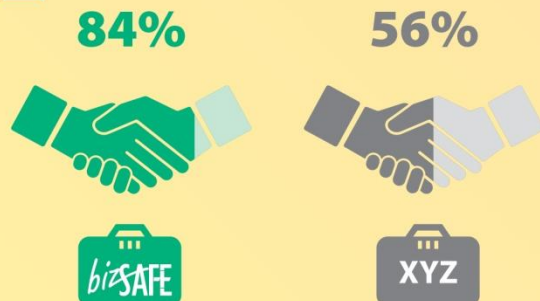
V



More bizSAFE Enterprises had WSH programmes in place such as rewards and penalties to promote better WSH outcomes.

7% of bizSAFE Enterprises vs 28% of non-bizSAFE companies rushed workers to meet tight deadlines.

VI



84% of bizSAFE Enterprises vs 56% of non-bizSAFE companies saw management staff attending WSH committee meetings.

Conclusion

5 The study revealed that the bizSAFE programme has succeeded in meeting its objectives to raise awareness, and in helping companies build capabilities in managing WSH risks and build commitment towards WSH. It also found that bizSAFE has created business value for bizSAFE enterprises as clients preferred to engage them for their better management of WSH and their superior WSH performance.