

WORKPLACE SAFETY AND HEALTH REPORT 2014

MORE INJURIES, FEWER DEATHS AT WORKPLACES IN 2014



FATAL INJURIES

60 (6) workers were fatally injured, rate of **1.8** per **100,000** employed persons.

45% of the fatal injuries came from the construction sector, **20%** by Transportation & Storage sector.



MAJOR INJURIES

672 (57) workers sustained major injuries, rate of **20.0** per **100,000** employed persons.

Number of major injuries increased by 5% over 2013. Construction sector was the top contributor.



MINOR INJURIES

12,863 (502) workers encountered less severe injuries, rate of **383** per **100,000** employed persons.

Number of minor injuries increased by 10% over 2013.

25% increase for the Transportation & Storage sector.

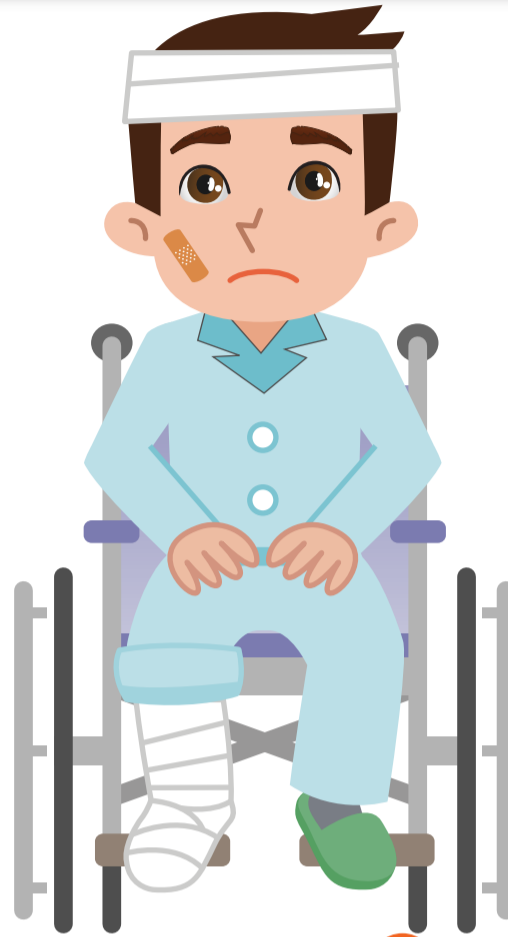


MAN-DAYS LOST

678,951 (47,025) man-days were lost.

Accident Severity Rate = **84** man-days lost per million man-hours worked.

Accident Frequency Rate = **1.7** incidents occurred per million man-hours worked.



() Figures in parentheses refer to the number of work-related traffic injuries.



OCCUPATIONAL DISEASES

992 occupational disease (OD) cases were confirmed in 2014, an incidence rate of **29.5** per **100,000** employed persons.

1ST leading OD is Noise-Induced Deafness (NID).

Manufacturing sector continued to have highest number of NID cases.

2ND leading OD is Work-Related Musculoskeletal Disorders (WRMSD). Transportation & Storage sector was the top contributor.



SURVEILLANCE PROGRAMMES

MEDICAL **139,685** workers from **2,217** workplaces were monitored under the Medical Surveillance Programme.

HYGIENE **423** companies under noise monitoring; **1,085** chemical monitoring results received.

BUSINESS UNDER SURVEILLANCE **19** companies entered surveillance phase in 2014.

TOP 3 INCIDENT TYPES OF WORKPLACE INJURIES

SEVERITY OF INJURY	Falls from Heights (FFH)	Slips, Trips and Falls	Struck by Moving Objects	Caught In/ Between Objects	Cut/ Stabbed by Objects	Collapse/ Failure of Structure & Equipment	% OF ALL INJURIES
FATAL	10 (17%)		8 (13%)			6 (10%)	40%
MAJOR	88 (13%)	171 (25%)		69 (10%)			48%
MINOR		2,962 (23%)	1,965 (15%)		1,623 (13%)		51%