

Annex B

Operation “Night Eagle” – Safety Lapses Identified

Location: Financial Centre + Vicinity areas

Contractor: HYUNDAI ENGINEERING & CONSTRUCTION CO. LTD



Photos taken with flashlight by the OSH Inspectorate revealed that workers were working with insufficient lighting in that area.



Gaps and corroded openings were found on the existing bondeck. Workers were seen stepping on the existing bondeck while working at the area.

Location: Financial Centre + Vicinity areas

Contractor: KAJIMA-TIONG SENG JV



Failure to provide effective guard-rails , barriers or other equally means to prevent fall to open side or opening through which a person is liable to fall more than 2 metres

Location: F1 Track
Contractor: PICO World (Singapore) Pte Ltd



Failure to implement reasonably practicable measures and safe work procedures to minimise and control the risk posed for works involving the transfer of the materials using forklifts.



Failure to ensure that all electric wiring was supported on proper insulators.

Location: Marina IR
Contractor: KTC CIVIL ENGINEERING & CONSTRUCTION PTE LTD (RC CONSTRUCTION WORKS)



Failure to keep the passageways and places of work, free from debris and protruding objects that could cause tripping.

Location: Marina IR
Contractor: KIM HUP CHOR CONSTRUCTION PTE. LTD.



Failure to provide every side of work platforms with guardrails and toe-boards.

Location: Marina IR
Contractor: GUTHRIE ENGINEERING (S) PTE LTD



Failure to ensure every lifting appliance was marked conspicuously with its safe working load and a distinctive number or any other means of identification.



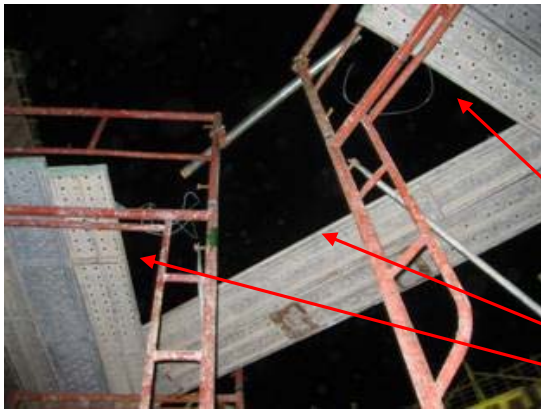
Failure to implement safe work procedures to control risk arising from the stacking, lifting and transferring of galvanised pipes.

Location: Marina IR
Contractor: SHINRYO CORPORATION



Failure to ensure that the interlocking device of the passenger hoist bearing was in good working condition such that the cage or platform cannot be moved away from the landing until the gate is closed

Location: Sentosa IR
Contractor: KAJIMA-TIONG SENG JV



Failure to provide every side of the work platform from which a person was liable to fall more than 2 metres with toe-boards and guard-rails



Failure to provide and maintain handrails on one side of the staircases at multiple locations

Location: Sentosa IR
Contractor: PAN POLY ENGINEERING PTE. LTD.



Failure to ensure that the electrical extension cable used to connect the electrical cutter shall not be left on the ground unless it was provided with adequate protection to withstand the wear and tear to which it may be subjected to.