



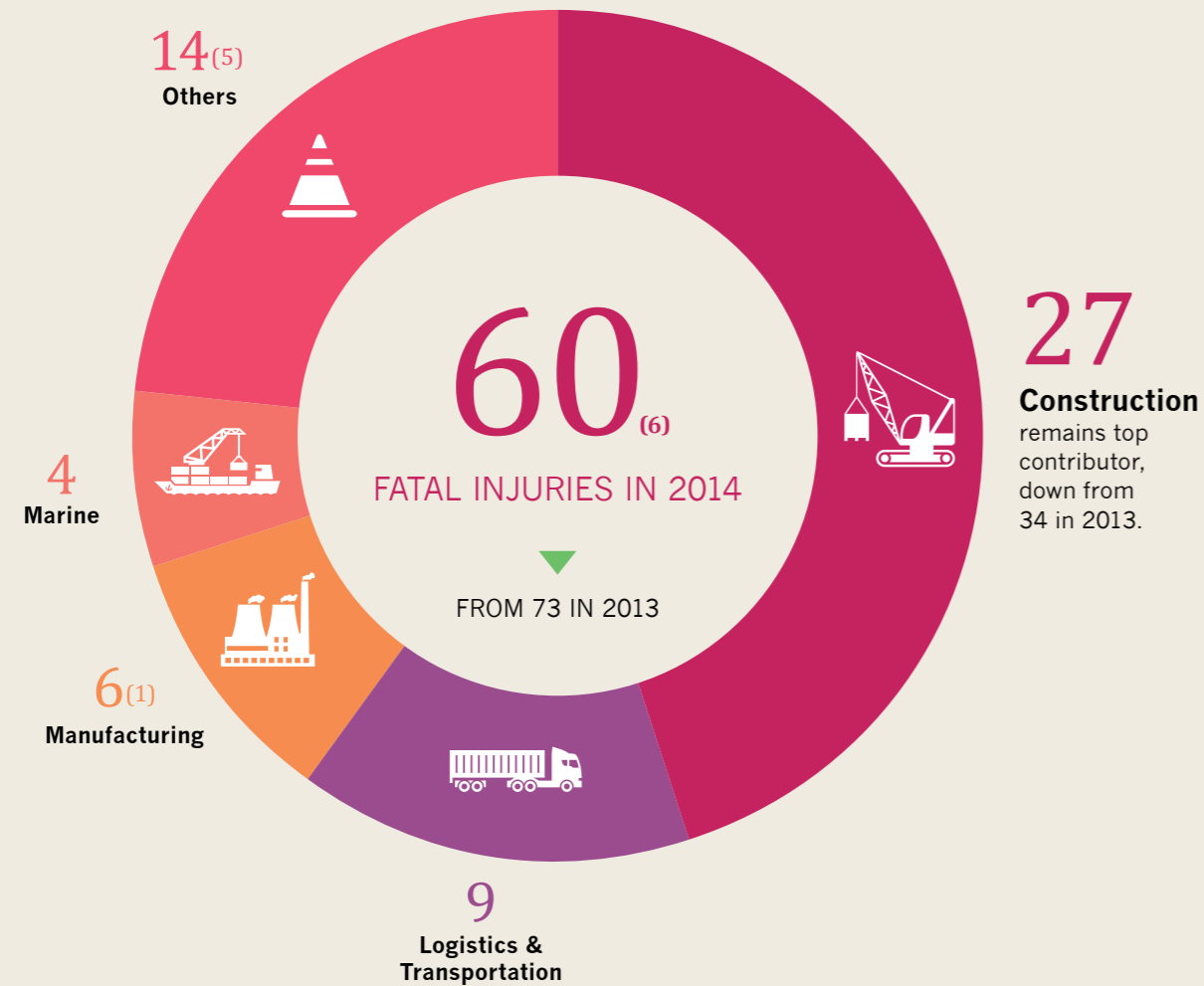
OUR WSH  
**PERFORMANCE**

---

01 / WORKPLACE INJURIES 2014

02 / OVERALL WSH STATISTICS

FATAL



Note: Figures in parentheses refer to the number of work-related traffic injuries.

**RATE**

**1.8**  
per 100,000  
employed persons

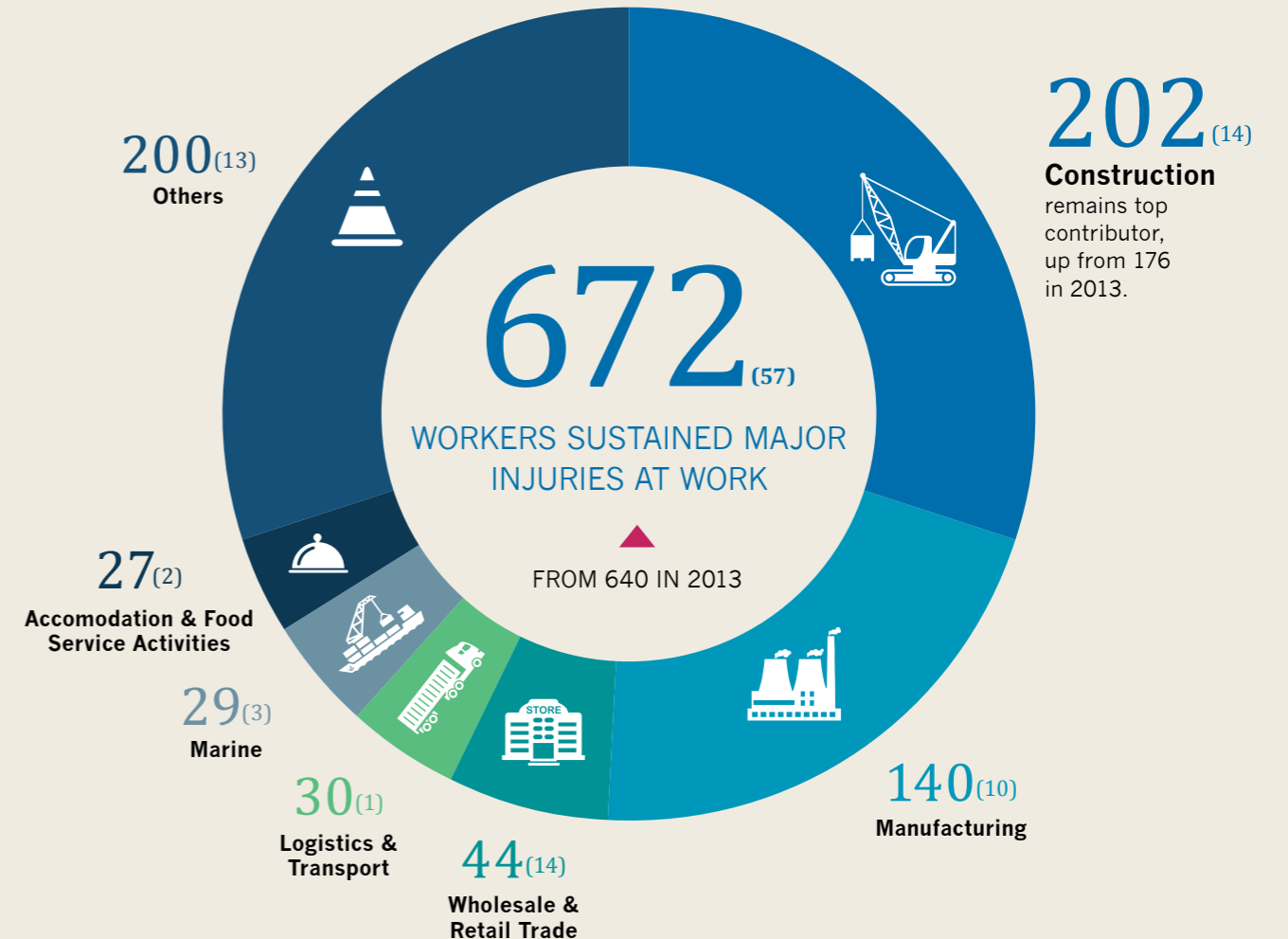
▼  
FROM 2.3 IN 2013

**INSIGHTS**

**Fall From Heights**

remains leading incident type, accounting for 17% of the fatal injuries. Majority of fatal injuries due to Falls from Heights occurred at the physical workplace involving structures, roofs and formwork.

NON-FATAL  
MAJOR INJURIES



Note: Figures in parentheses refer to the number of work-related traffic injuries.

**RATE**

**20.0**  
per 100,000  
employed persons

▲  
FROM 19.8 IN 2013

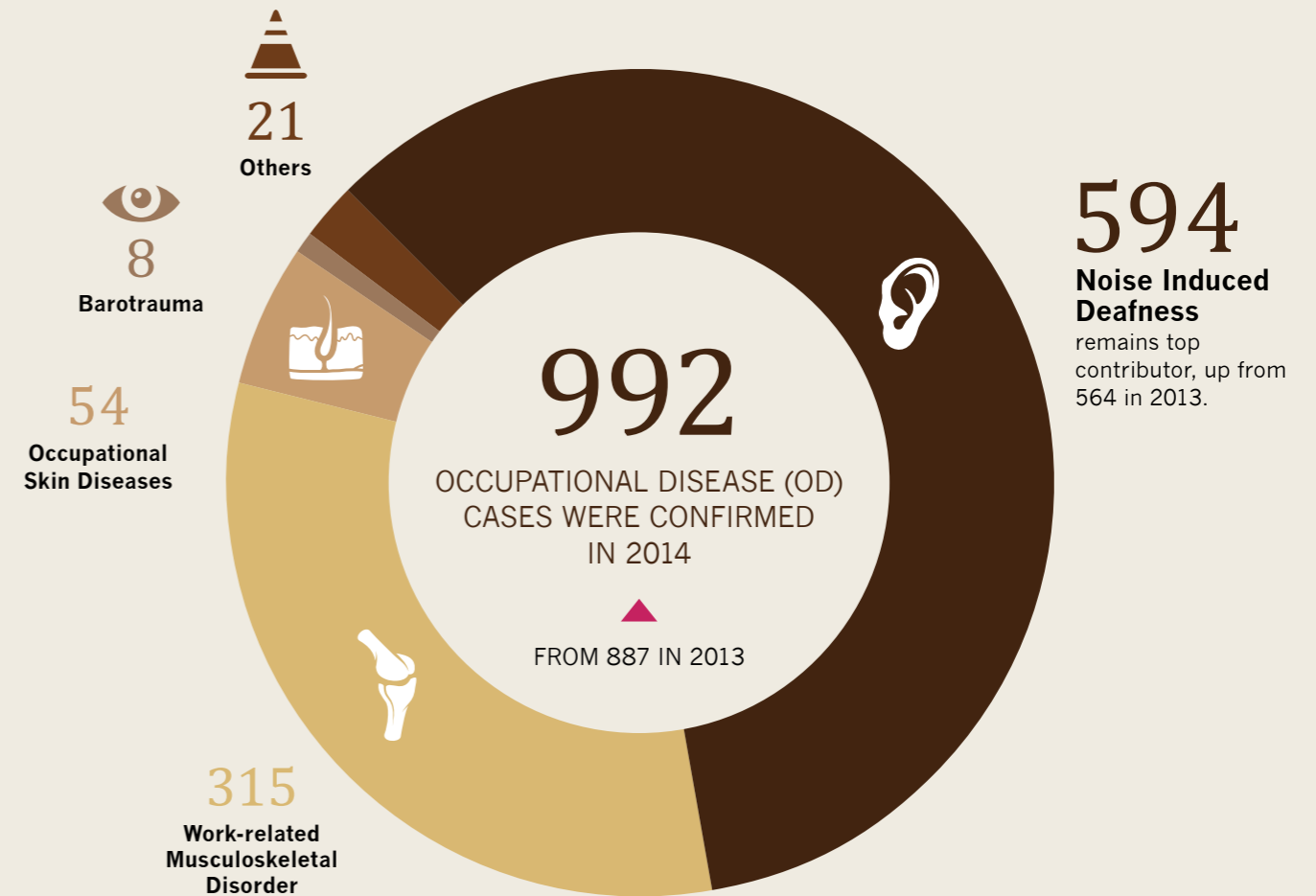
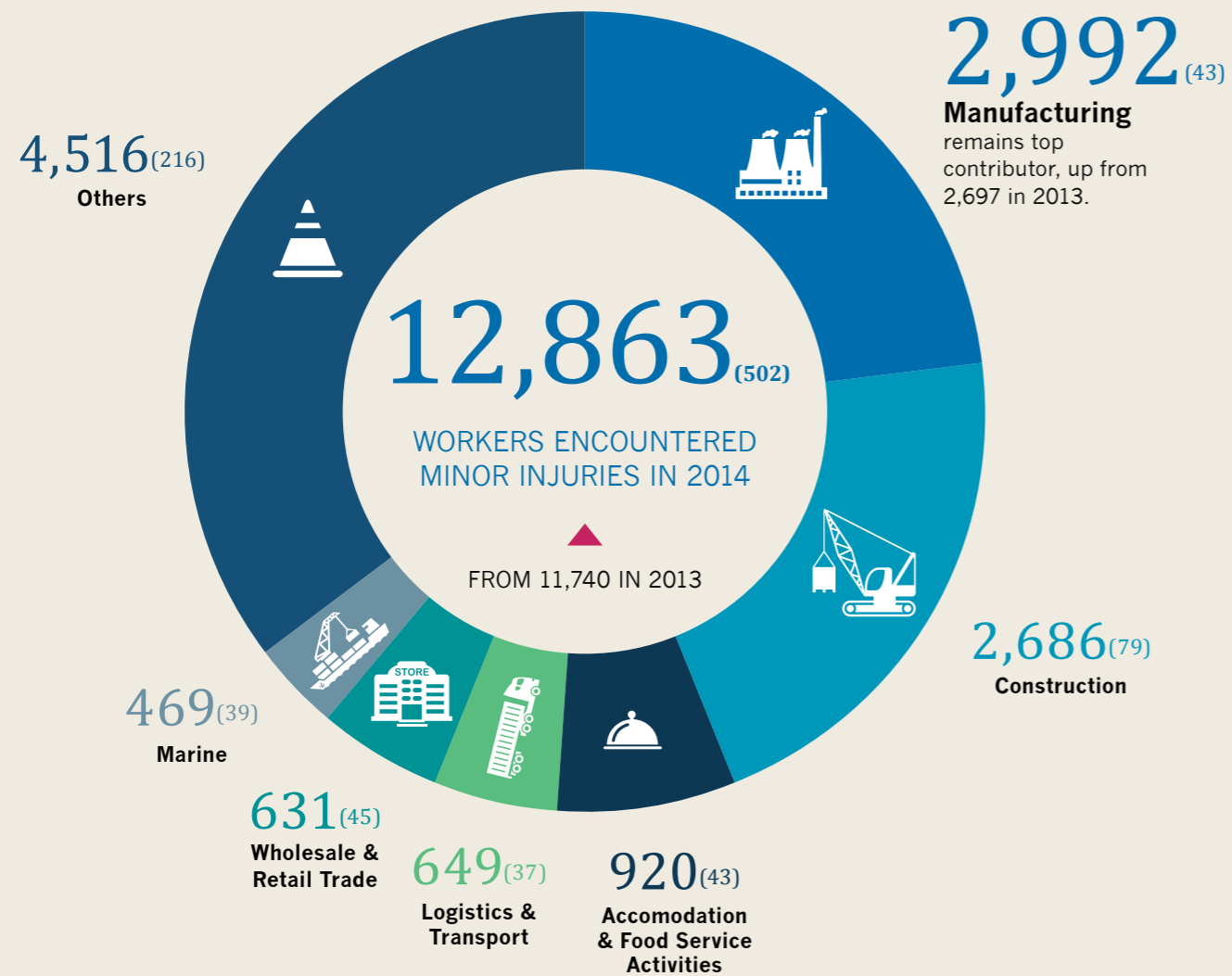
**INSIGHTS**

**Slips, Trips & Falls**

remains main area of concern as it was the leading incident type - 25% of major injuries

NON-FATAL  
MINOR INJURIES

OCCUPATIONAL DISEASE



Note: Figures in parentheses refer to the number of work-related traffic injuries.

**RATE**

**383**  
per 100,000  
employed persons

FROM 362 IN 2013

**INSIGHTS**

**Slips, Trips & Falls**

remains main area of concern as it was the leading incident type - 23% of minor injuries

**RATE**

**29.5**  
per 100,000  
employed persons

FROM 27.4 IN 2013

**INSIGHTS**

**Manufacturing Sector**

continued to have the highest number of NID cases, it saw a slight increase from 275 in 2013 to 288 in 2014.

## OVERALL WSH STATS

TABLE 1: NUMBER OF INJURIES AND OCCUPATIONAL DISEASES



	2013	2014
<b>Overall Injuries</b>	<b>12,453 (552)</b>	<b>13,595 (565)</b>
Fatal Injuries	73 (14)	60 (6)
Major Injuries	640 (51)	672 (57)
Minor Injuries	11,740 (487)	12,863 (502)
<b>Occupational Diseases</b>	<b>887</b>	<b>992</b>

Note: Figures in parentheses refer to the number of work-related traffic injuries.

TABLE 2: KEY WSH INDICATORS PER 100,000 EMPLOYED PERSONS



	2013	2014
<b>Overall Injury Rate<sup>1</sup></b>	<b>384</b>	<b>405</b>
Fatal Injury Rate	2.3	1.8
Major Injury Rate	19.8	20.0
Minor Injury Rate	362	383
<b>Accident Frequency Rate<sup>2</sup></b>	<b>1.6</b>	<b>1.7</b>
<b>Accident Severity Rate<sup>3</sup></b>	<b>93</b>	<b>84</b>
<b>Occupational Disease Incidence Rate<sup>4</sup></b>	<b>27.4</b>	<b>29.5</b>

<b><sup>1</sup> Workplace Injury Rate</b>
$\frac{\text{No. of Fatal and Non-Fatal Workplace Injuries}}{\text{No. of Employed Persons}} \times 100,000$
<b><sup>2</sup> Accident Frequency Rate (AFR)</b>
$\frac{\text{No. of Workplace Accidents Reported}}{\text{No. of Man-hours Worked}} \times 1,000,000$
<b><sup>3</sup> Accident Severity Rate (ASR)</b>
$\frac{\text{No. of Man Days Lost To Workplace Accidents}}{\text{No. of Man-hours Worked}} \times 1,000,000$
<b><sup>4</sup> Occupational Disease Incidence Rate</b>
$\frac{\text{No. of Occupational Diseases}}{\text{No. of Employed Persons}} \times 100,000$

TABLE 3: WORK INJURY COMPENSATION REPORT



	2013	2014
<b>No. of Permanent Incapacity (PI) and Death cases awarded compensation</b>	<b>4,543</b>	<b>4,607</b>
<b>Total sum of PI and Death compensation awarded (S\$, Million)</b>	<b>\$75.38</b>	<b>\$80.94</b>
<b>No. of accidents reported with no PI sustained</b>	<b>9,039</b>	<b>10,126</b>