

UPLIFTING OUR LOWER-WAGE WORKERS IS A WHOLE-OF-SOCIETY EFFORT



The Government, unions and employers have worked closely over the years to improve their equality, mobility and dignity.

PWM – Higher wages; Better prospects



Cleaning PWM
since 2014

benefits **40,800**

↑37%
in wages*

2013: \$1,000
2019: \$1,388



Security PWM
since 2016

benefits **40,000**

↑29%
in wages*

2015: \$1,838
2019: \$2,391



Landscaping PWM
since 2016

benefits **2,700**

↑24%
in wages*

2015: \$1,200
2019: \$1,500

*Cumulative real change, median monthly gross wages (excluding employer CPF) of full-time resident employees, deflated by Consumer Price Index for all items at 2019 prices (2019 = 100). Source: Occupational Wage Survey, MRSD, MOM

Security PWM – Shorter hours; Higher pay

The tripartite partners agreed to:



Reduce overtime hours/month from 95 to 72 hours



Raise PWM wage floors by ~\$150

Mr Goh | 50 years old | Security Supervisor
Securite Associates | Joined industry in 2017



Career Progression

From Security Officer in 2017 to **Senior Security Officer** in 2019 and **Security Supervisor** in 2020

Fewer work hours, more rest days

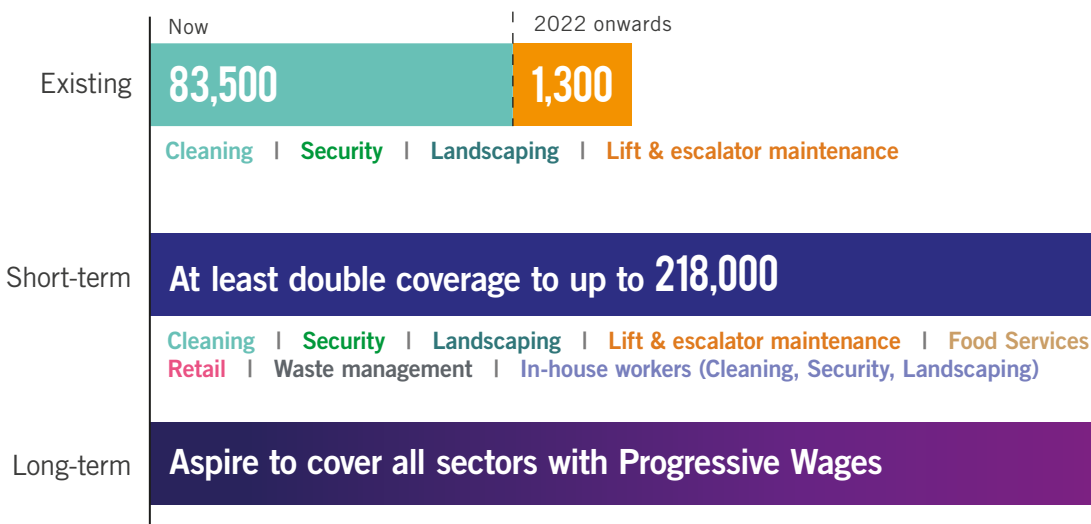
From 94 OT hours/month in 2017 to **72 OT hours/month, 2 more rest days** in 2020

Higher Salary

>50% ↑

in gross wages from \$1,800/month in 2017

Cover ALL sectors with Progressive Wages

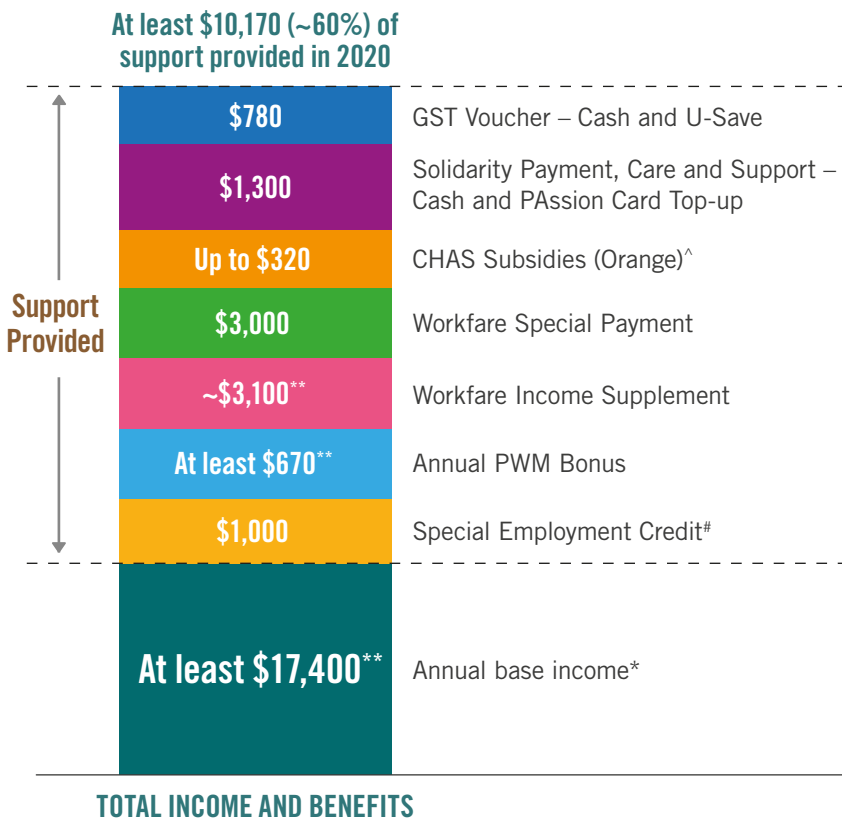


WORKFARE INCOME SUPPLEMENT (WIS)

~ **\$7.8 billion** disbursed to almost **930,000** workers since 2007

~ **\$1.5 billion** of additional Workfare Special Payouts disbursed to ~ **500,000** workers in 2020

MORE SUPPORT FOR OUR LOWER-WAGE WORKERS IN 2020



Mr Samsudin | 65 years old
Landscape worker
BSG Landscape
Joined industry in 2013



**Note: Indicative wage figures have been used, due to confidentiality reasons.

^For medical subsidies.

This represents the amount of wage offset provided to Mr Samsudin's employer out of the base amount paid to him in wages.

* Landscape workers including Mr Samsudin earn at least \$1,450/month in basic wages under PWM.

MORE SUPPORT FOR TRAINING



Workfare Skills Support scheme supported **300,000 workers** to upgrade their skills

From July 2020 onwards

Increase in annual cap for Training Commitment Award (TCA) from **\$400** to **\$1,000**

Increase in Training Allowance from **\$4.50/h** to **\$6/h**

BEYOND MONETARY SUPPORT, WE CARE FOR THEIR WELLBEING



~ **5 in 10** receive medical and dental subsidies under CHAS



> **9 in 10** receive GST Voucher – Cash, Medisave and U-Save



~ **8 in 10** own their own homes



Find out more about how you can play a part to support a fair and progressive work environment for workers!